



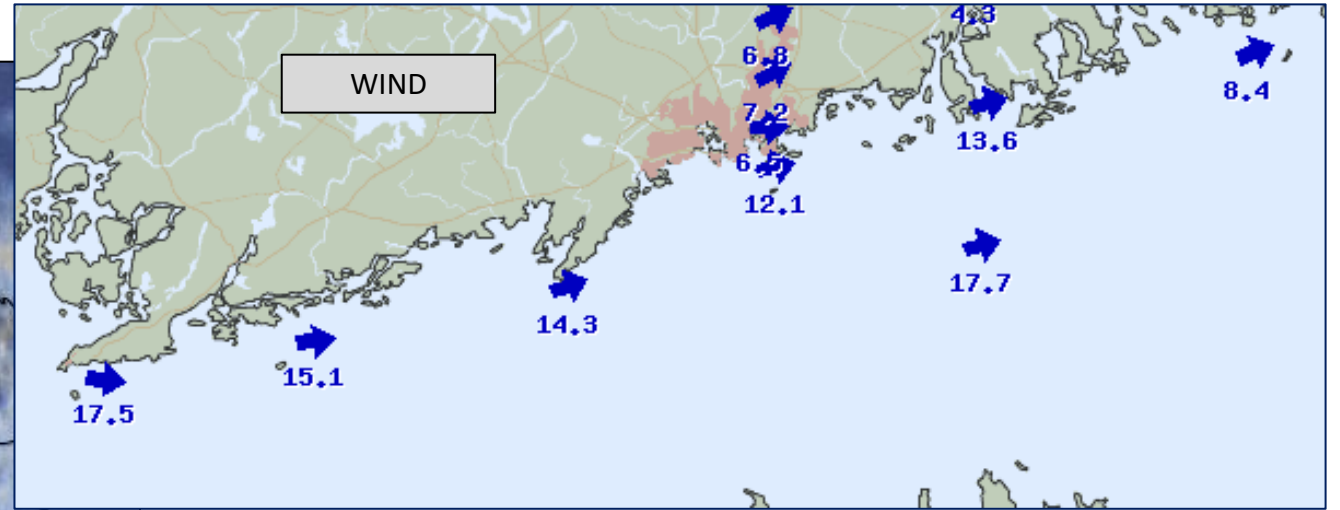
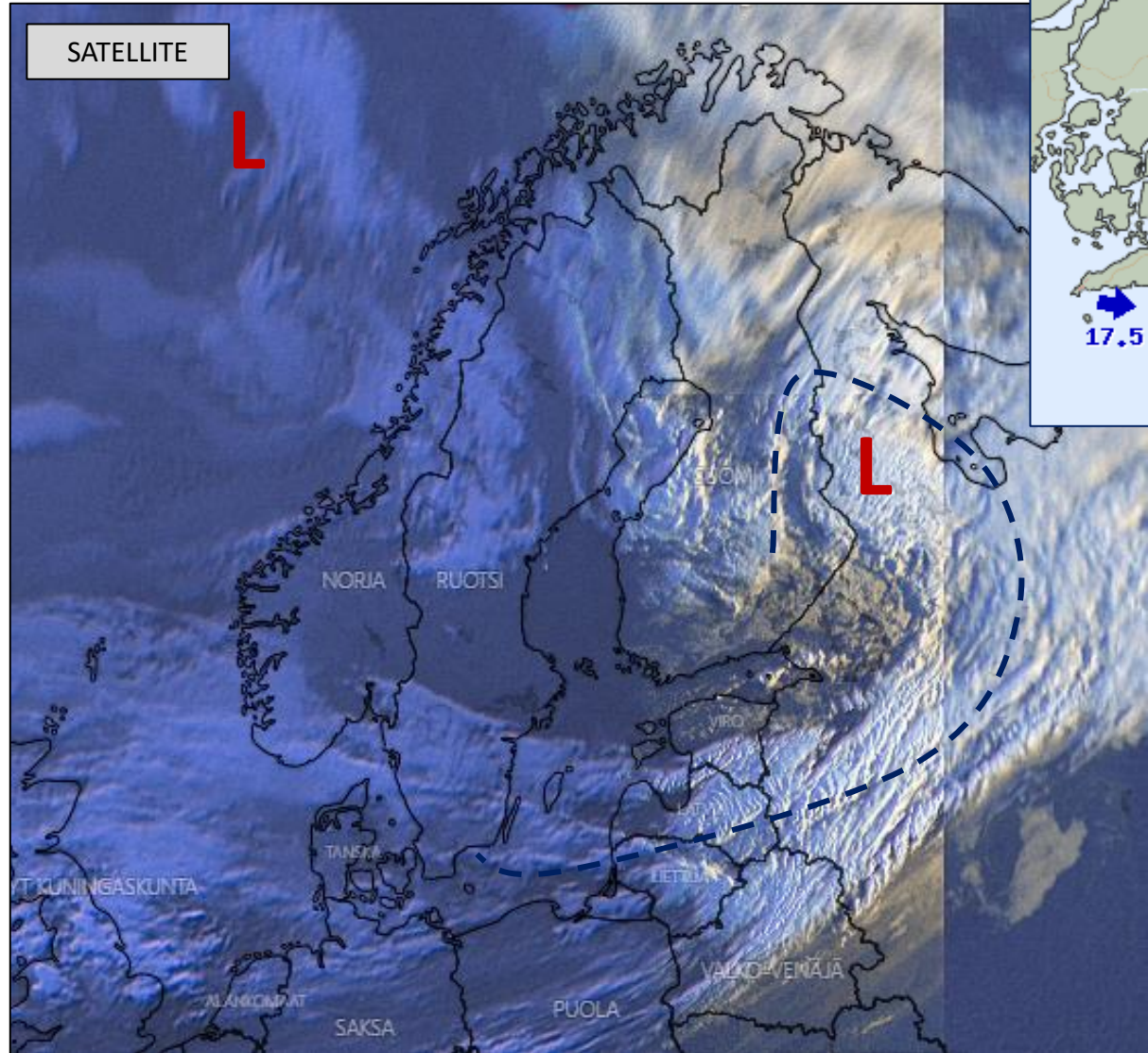
SAILING TEAM  
**FINLAND**



**THE PREDICTION** – Sun 13.09.2020



# OBSERVATIONS 07:45

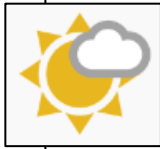


HARMAJA: 12.1 m/s, gust 15.9 m/s



# THE GENERAL SITUATION

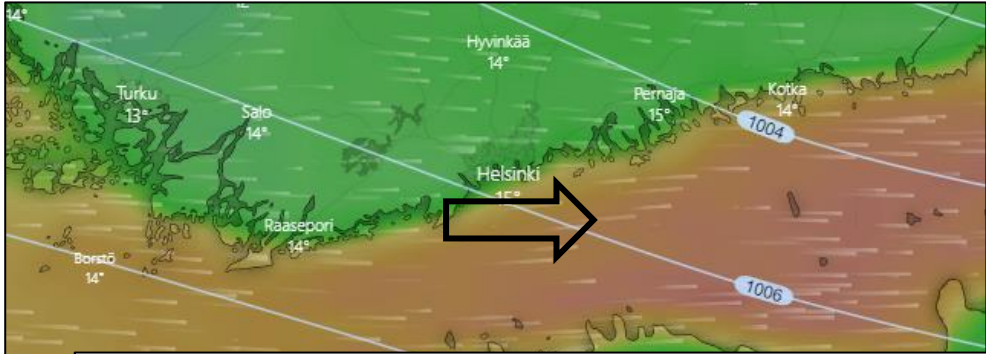
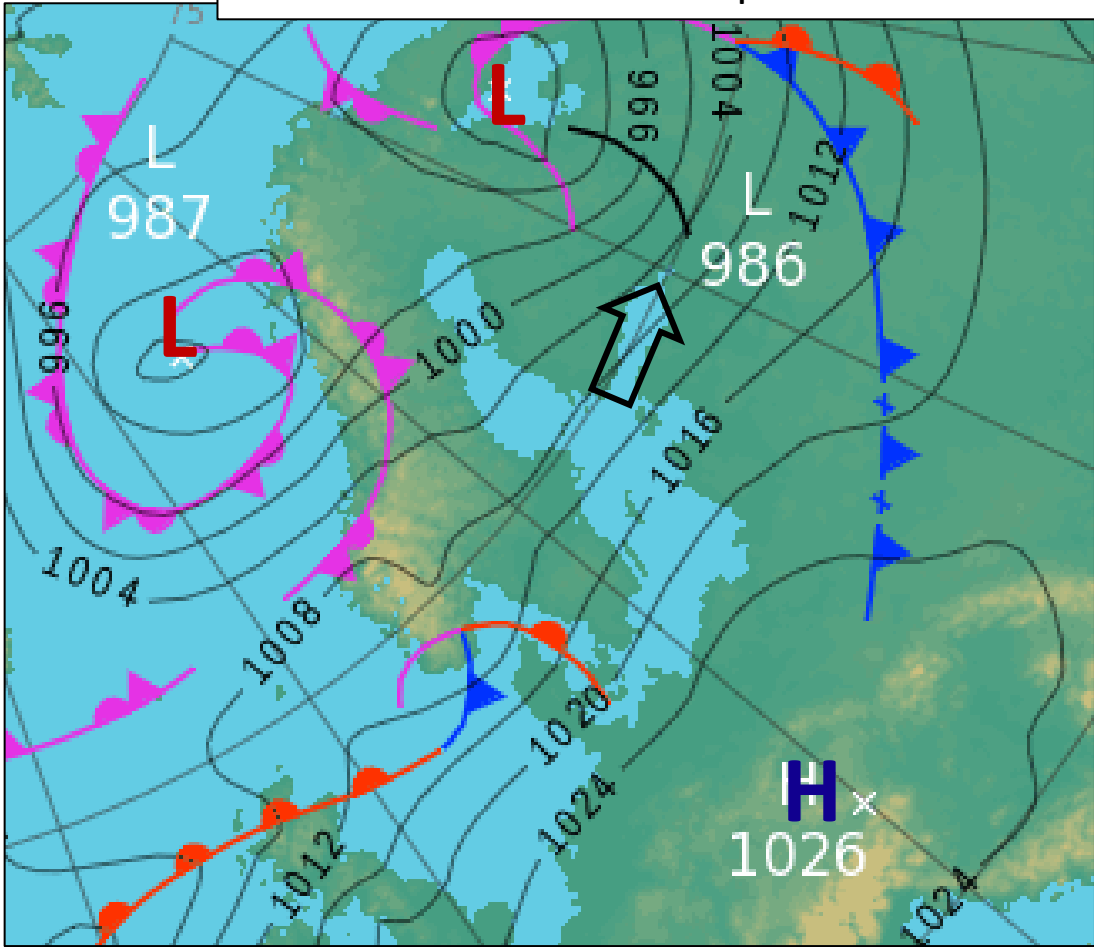
Large low pressure area, with one centre and yesterday's front moved to the east of Finland. Strong/heavy W-WSW winds. Sunny-partly cloudy.  
Temp. ...15 C.



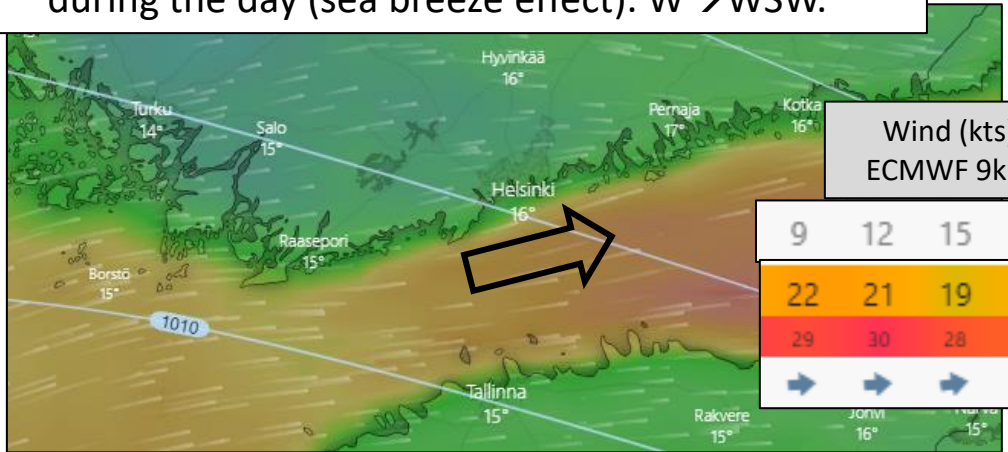
**STRONG WIND WARNING**

**WAVE WARNING**

**Official text forecast for Suomenlahti:**  
Länsituulta 13-17 m/s. Illalla heikkenevää tuulta, yöllä 8-12 m/s. Enimmäkseen hyvä näkyvyys.



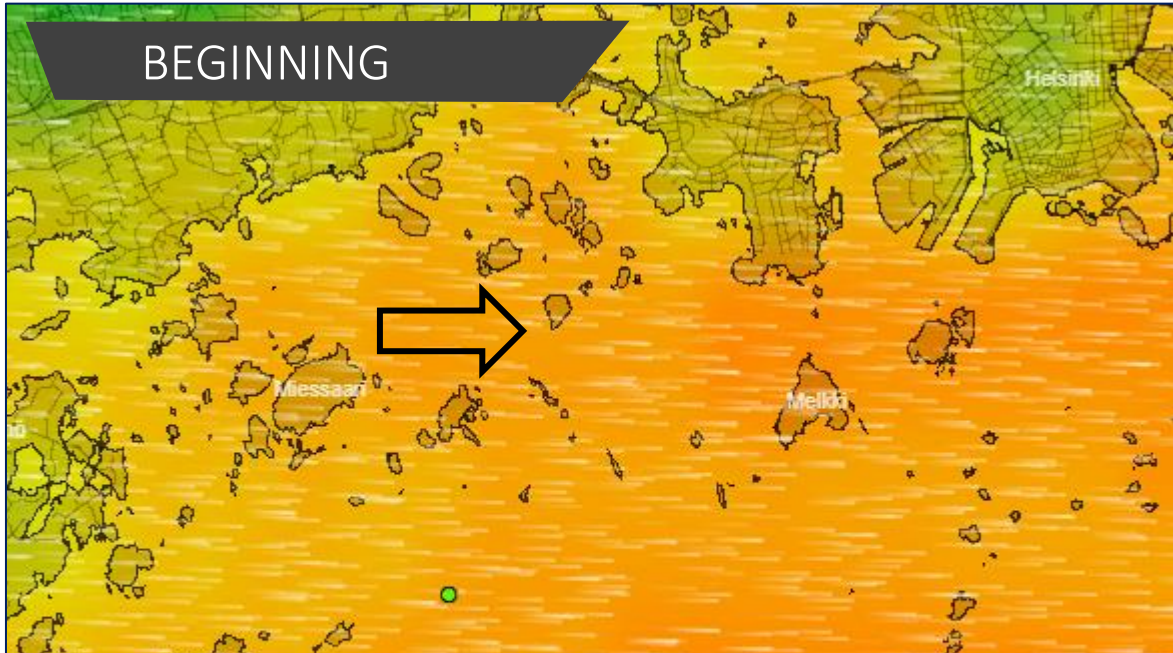
Gusty. The average direction is turning minimally left during the day (sea breeze effect). W→WSW.





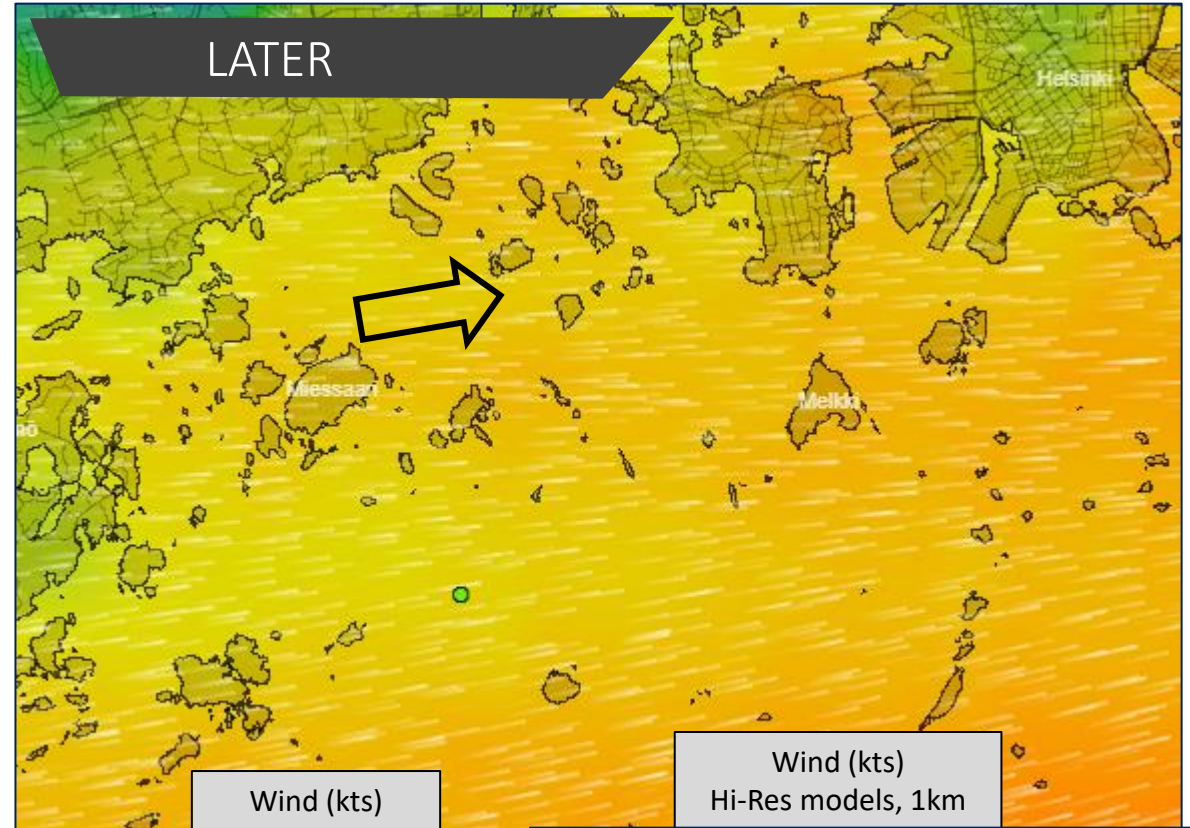
# THE SMALL-SCALE SITUATION

**THE EFFECTS** : Strong/heavy W-WSW gradient wind. Mechanical and thermal turbulence from land. Some thermal/sea breeze effects.



The large-scale flow, the gradient wind, is decreasing slightly later today, but the effects of the warming land wants to increase the winds a bit...so a bit unsure if it drops, stays or even builds?

Average direction turning just a bit left W→WSW, but shifts and gusts. Generally 17-23 kts, gusts ...30 kts. (On the open sea it is heavy today).



Wind (kts) ECMWF 9km			
9	12	15	18
22	21	19	20
29	30	28	27
→	→	→	→

Wind (kts) Hi-Res models, 1km									
09	10	11	12	13	14	15	16	17	18
☀	☀	☀	☀	☀	☀	☀	☀	☀	☀
23	21	20	20	19	17	18	19	18	17
25	23	22	22	20	20	19	19	20	20



# MELSTEN & AREA I

**Melsten:** Shifty and gusty. More stable on the left/outside.

When the average wind direction turns slightly left during the day, then the wind areas and disturbed areas move also and the game can change a bit.

**Miessaari:** Shifts/gusts. Disturbance from Miessaari island. The wind is coming around both sides of the island. Where is the top mark (and the course) compared to this? With the WSW direction, the wind is probably better mid-right. At the bottom more even winds, but close to the downwind land the wind can slow a bit down (and waves just a bit more complex)





## AREA C, LAUTTASAARI



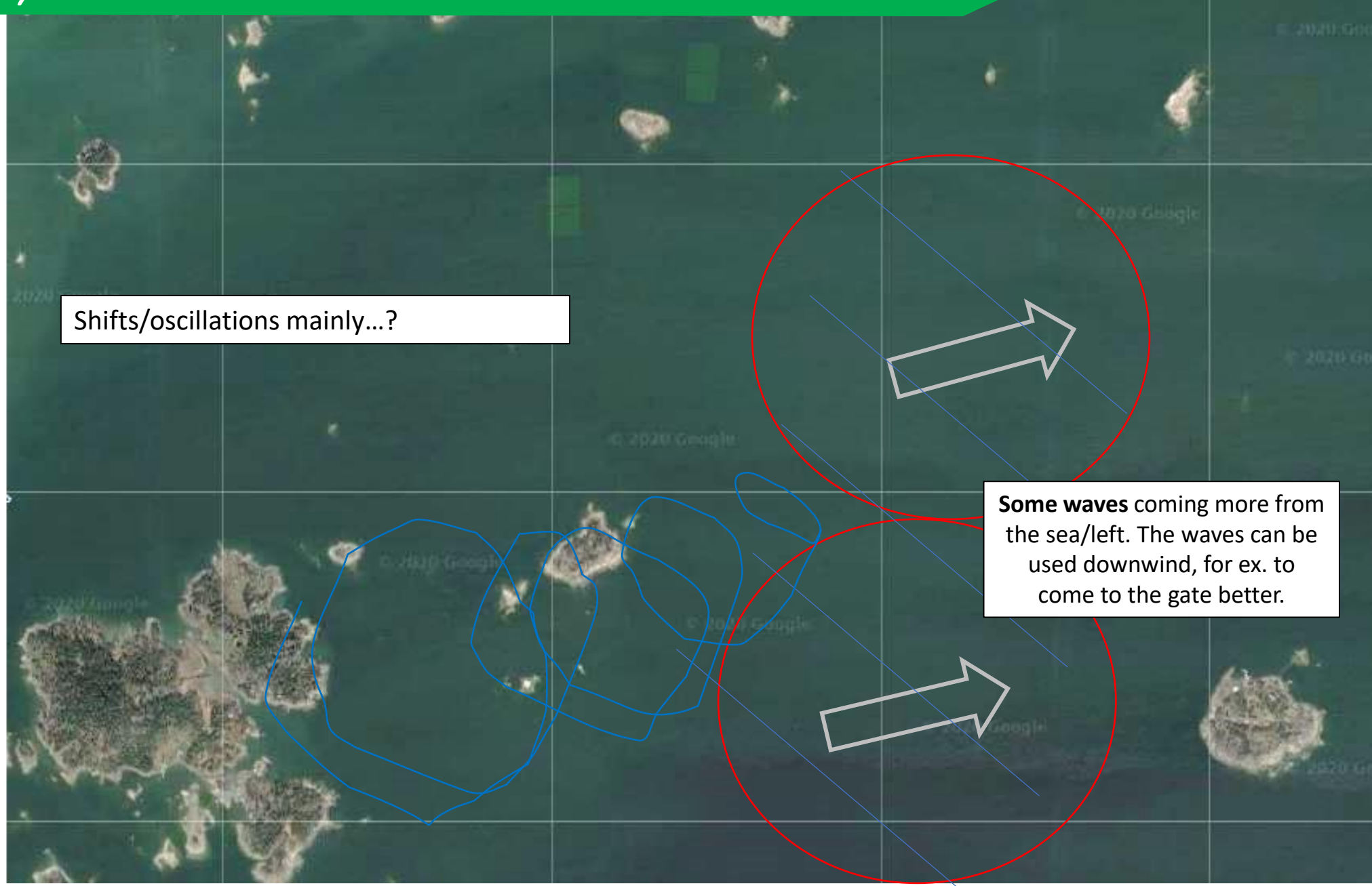
Shifts. Average wind direction turning just a bit left during the day. Possibly a small right bend in the breeze further in? Closer to downwind land the wind can get a bit lighter and waves choppier.



# AREA K, RYSÄKARI

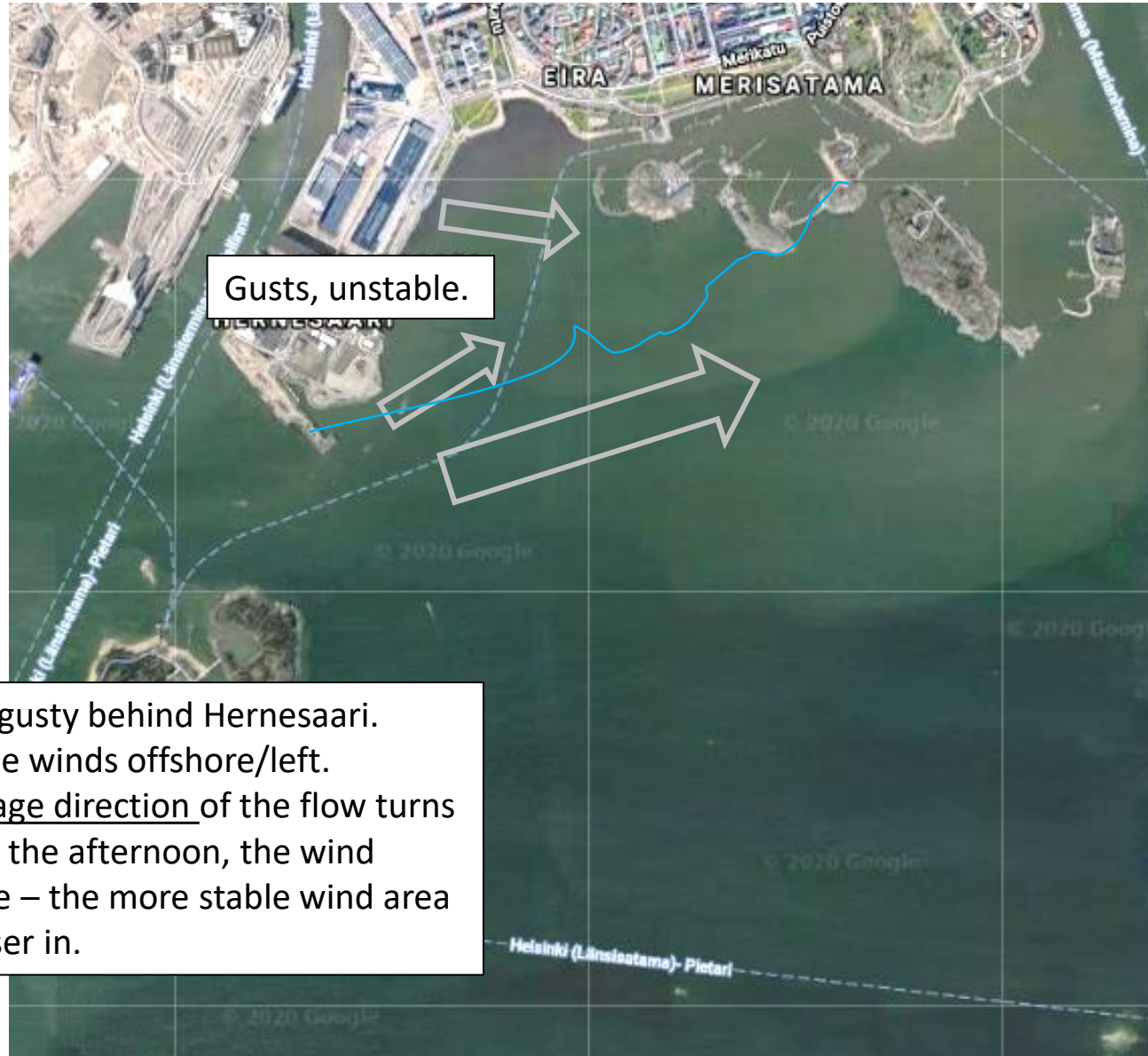
Shifts/oscillations mainly...?

**Some waves** coming more from the sea/left. The waves can be used downwind, for ex. to come to the gate better.





# AREA C, HERNESAARI



Gusts, unstable.

Shifty and gusty behind Hernesaari.  
More stable winds offshore/left.  
If the average direction of the flow turns  
a bit left in the afternoon, the wind  
areas move – the more stable wind area  
comes closer in.